

How to replace seat hinges.

Kit Includes:

- 2 - Hinges (w/shims)
- 4 - 2" x 5/16 Carriage Bolt
- 4 - 5/16" Lock Nut
- 4 - 2 1/4" x 3/8" Bolt
- 4 - 3/8" Lock Nut

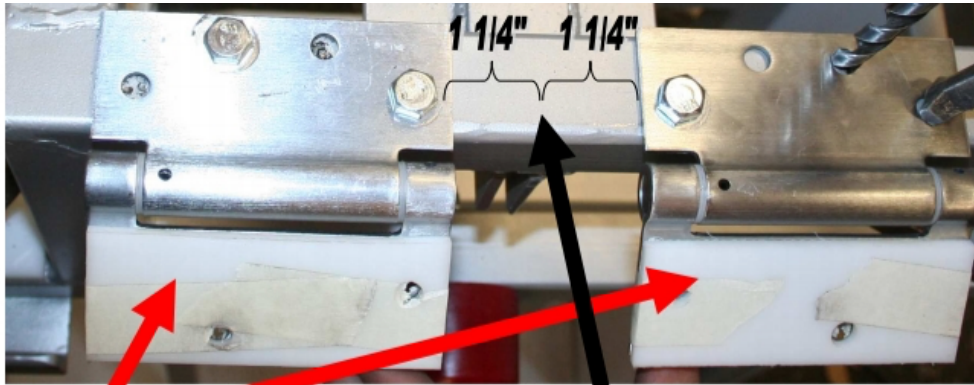


Tools Required:

- ~ Clamps
- ~ Marker
- ~ Drill (5/16" bit)
- ~ Ratchet (1/2" socket)
- ~ Hammer

Begin by removing the seat and old hinges.
Take a moment to inspect trigger mechanism
to insure that it is functioning properly.

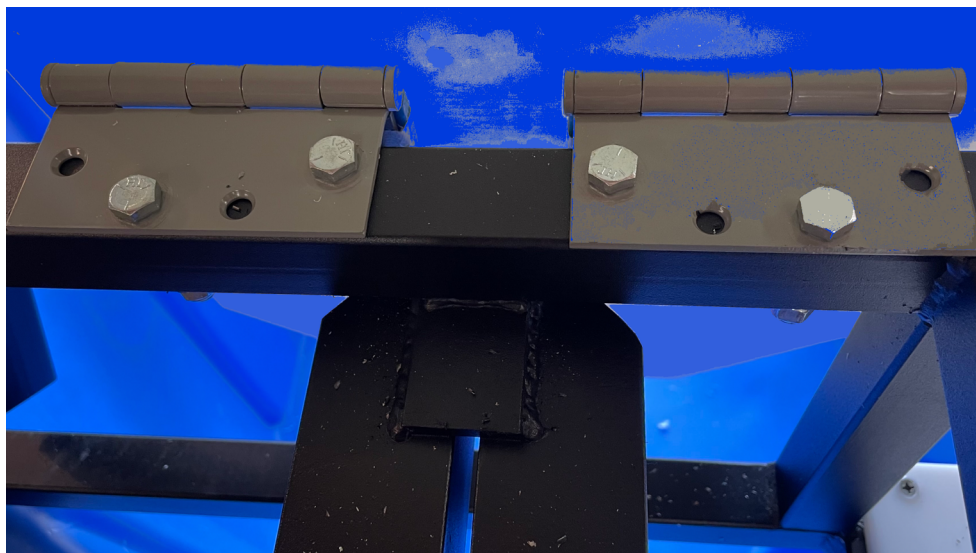
**If possible, utilize existing holes
from the old hinges. If not,
drill new per instructions below...**



**Leave shims taped
to the hinges.
(The shims should
be on the top and
toward the front
of the unit.)**

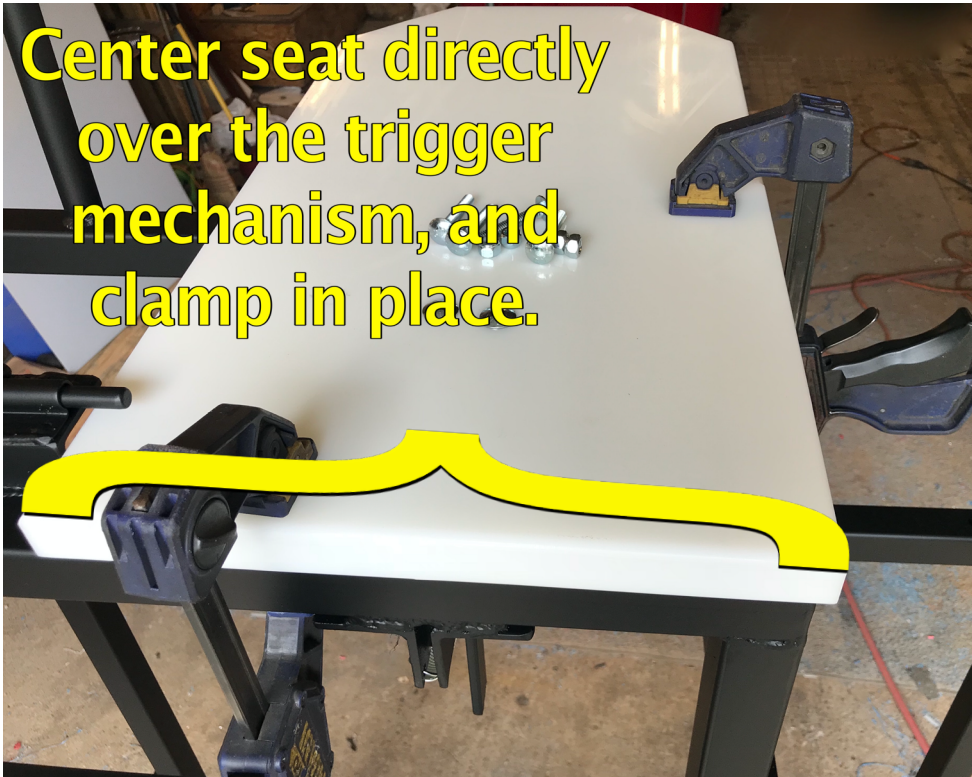
**Find the center of the
trigger mechanism and measure
1 1/4\"/>**

Using a 3/8\"/>



Put seat back in place.

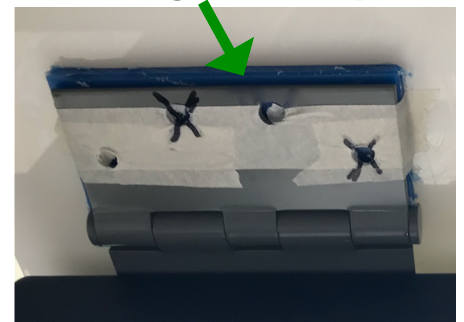
Center seat directly over the trigger mechanism, and clamp in place.



Lock seat latch in place, making sure is not leaning forward or backward.



Use existing shim, if present.



Leave at least a 1/8" gap between the seat and the safety latch.

WARNING: Do not leave enough space for a finger to get caught

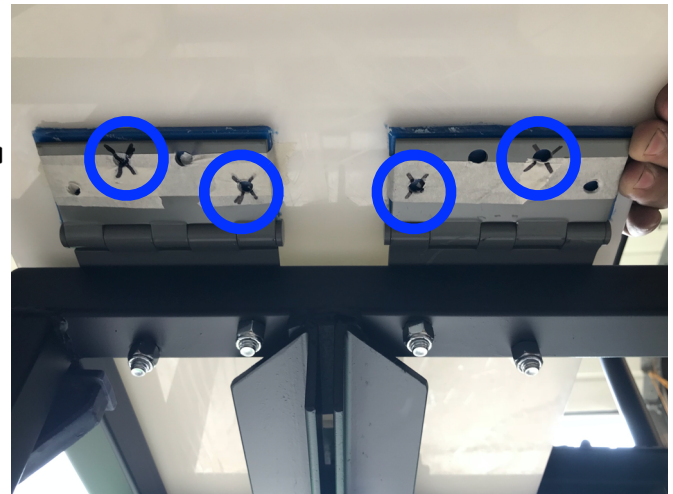


It is best to use the existing holes in the seat.

However, if you drill new holes, keep in mind that additional holes will weaken the seat. You should consider purchasing a new seat (which will come without pre-drilled holes).

If you choose to drill new holes, follow the instructions below.

NOTE: There are 4 holes per hinge. You will only use 2 holes per hinge. Use the hole pattern pictured. Holes should not be all in a straight line.



You can either...



**mark the holes,
remove the seat,
and drill,
or...**



**leave the seat on
the frame, and drill
from underneath.**



Tap bolts into place.



**Using a 1/2" socket,
tighten nuts.**



**Throroughly test the new seat
and trigger mechansim.**